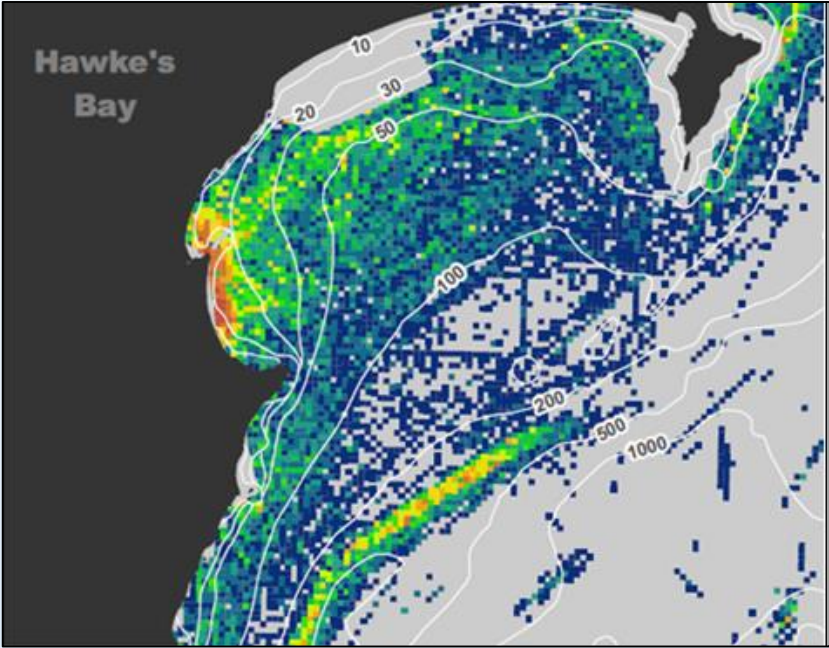
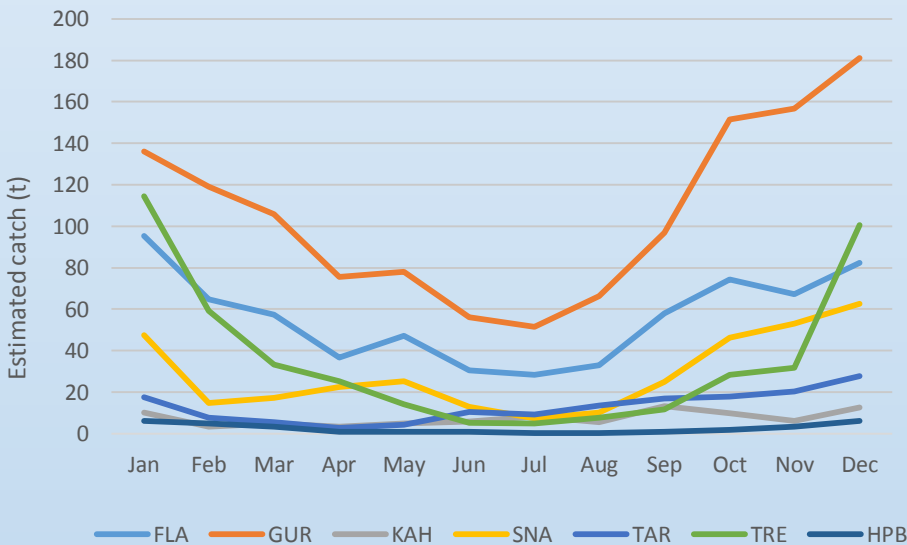


Hawke Bay finfish overview – July 2015

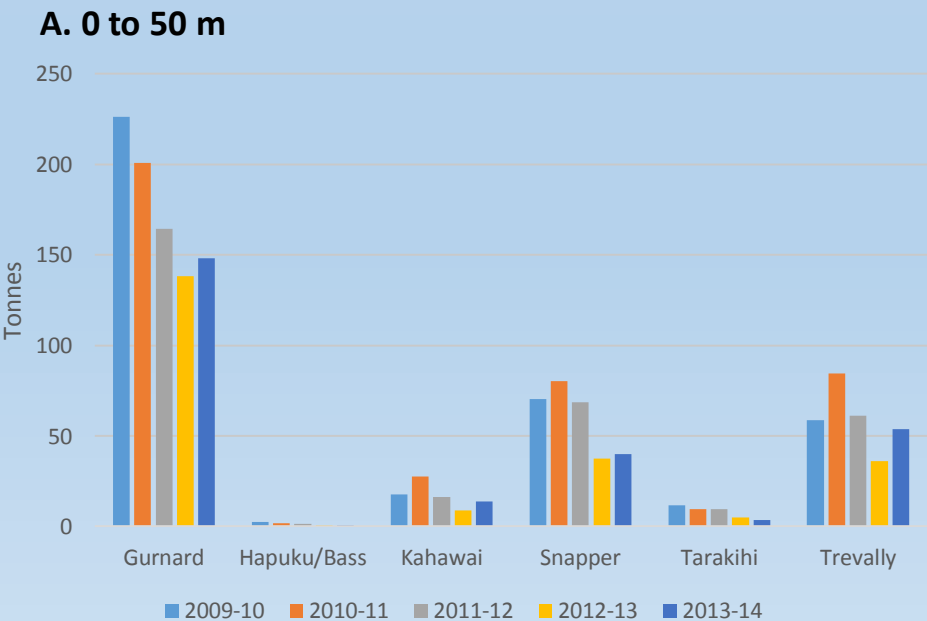


Commercial trawl intensity in 2013/14
- red is higher intensity, blue is lighter

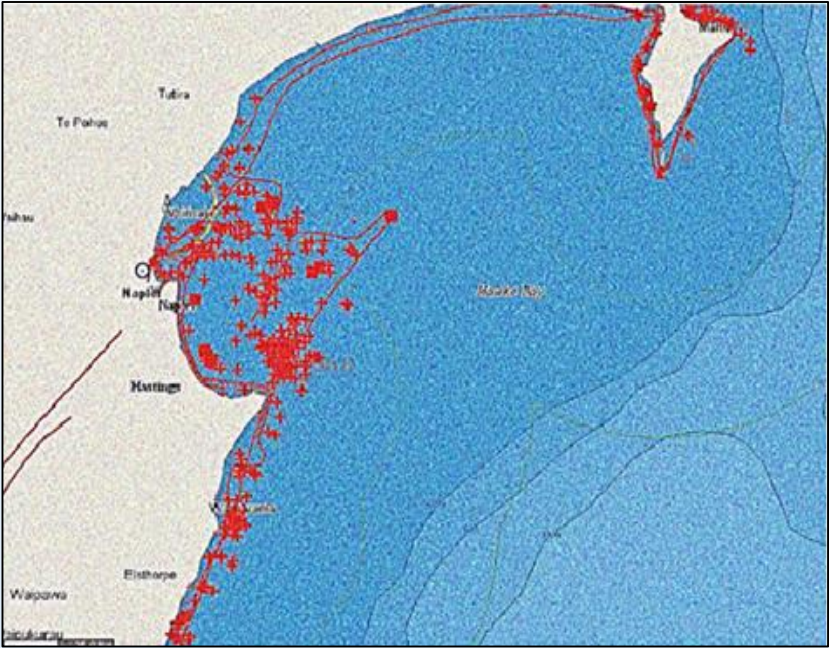
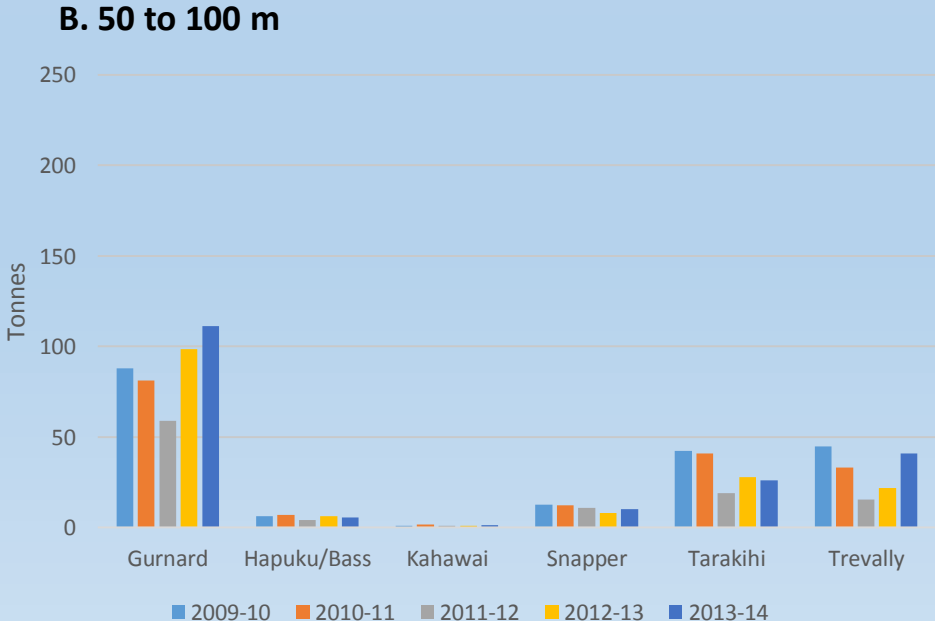


Seasonal commercial catch of selected species in Hawke Bay
- from the gurnard mixed bottom trawl fishery in 2013/14

Estimated commercial catch of selected species in Hawke Bay by depth contour from 2009/10 to 2013/14
A. Catch within 0 to 50 metres
B. Catch within 50 to 100 metres



Map of Hawke Bay
Showing selected fishing restrictions and the 50 metre and 100 metre depth contours



Recreational vessel locations for two flights in Jan 2012
On one flight day, 189 stationary trailer boats and 8 launches were counted, mostly in the southern half of the Bay and around Cape Kidnappers

