

Welcome!

To the second round of wider engagement for the National Blue Cod Strategy

Today we want:

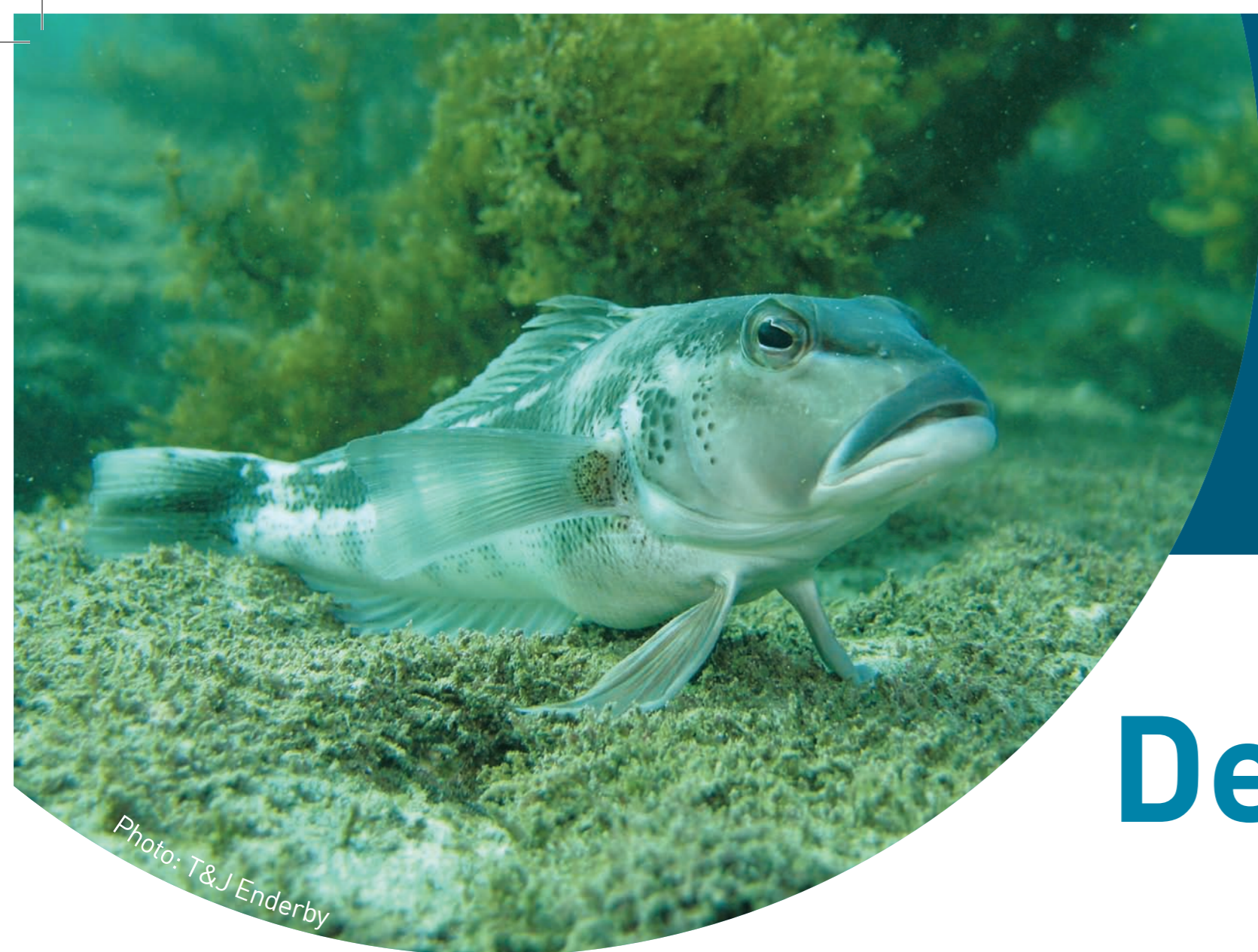
- To let you know the key findings from the first wider engagement round
- To present some possible options under each objective of the strategy
- To hear your thoughts about these options
- To find out if we have missed anything that needs consideration

Feel free to:

- Talk to one of us
- Fill out our second online survey at www.mpi.govt.nz/bluecod
- Email us at fmsubmissions@mpi.govt.nz

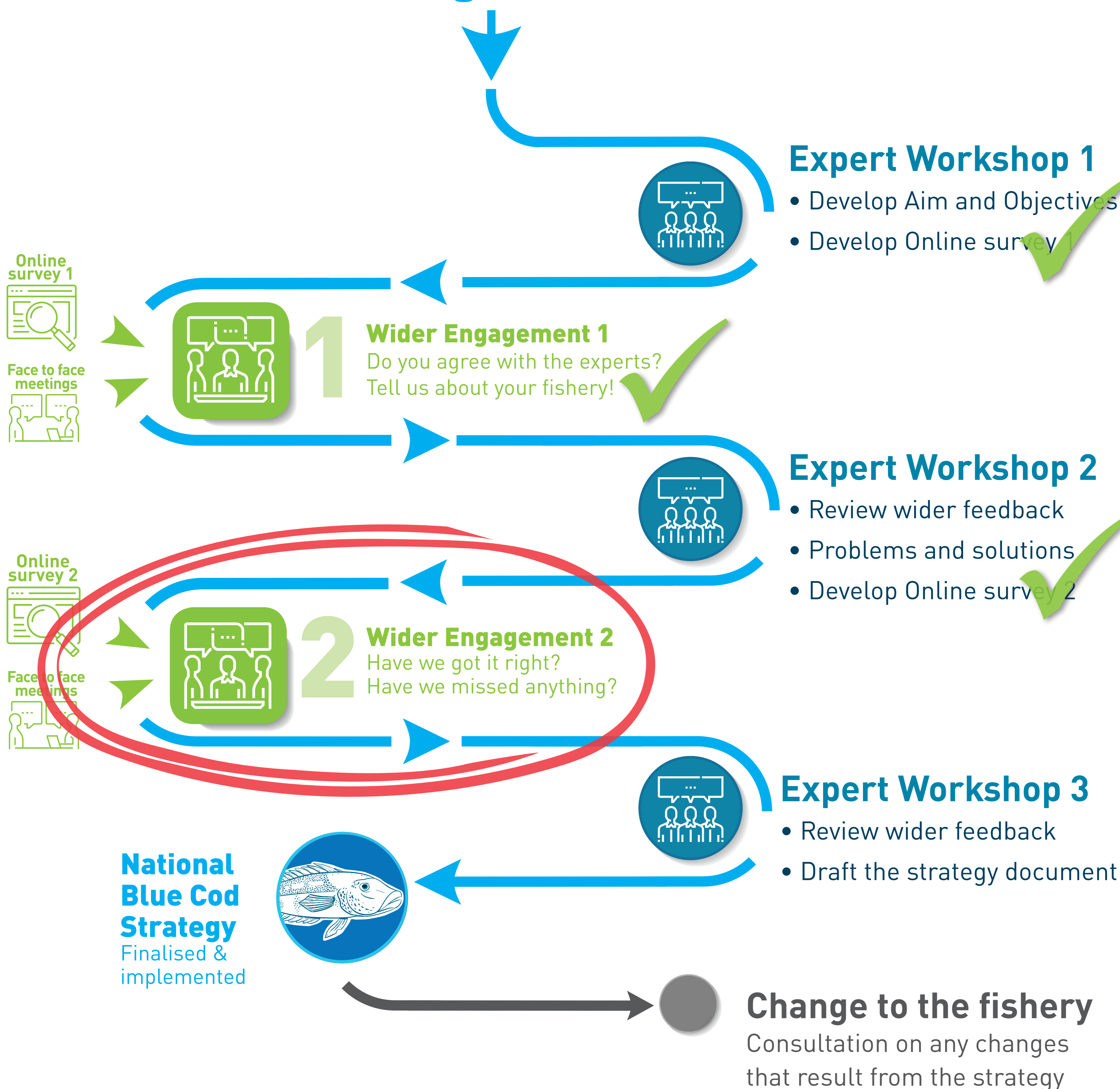


www.mpi.govt.nz/bluecod · 0800 00 83 33



Development to date

The National Blue Cod Strategy How do I get involved?





Expert Workshop 1 re-cap

At this first meeting, the following was developed:

What's the problem?

Blue cod fisheries in some areas are under pressure and in some places, fishers are telling us numbers are low. There are different rules in different places and no combined approach, so it can be hard to respond quickly enough to these pressures.

What we want – our aim

We want to work together to create a strategy which delivers abundant and sustainable blue cod fisheries for all New Zealanders.

How do we get there? – our objectives

Get the right information

Information is the bedrock of any fisheries management system. We need the right information and science, and we need to figure out the best way to get it.

Set the right targets

Setting targets for fish stocks is about making sure we're keeping stocks at sustainable levels that are right for the fishery and the people using it.

Set the right rules

We need to look at the current rules and make changes where appropriate to make sure they're effective, easily understood and consistent.

Make the right decisions

We need a framework to drive good, consistent decision-making and to make sure decisions are made on time.

Get buy-in

If this is going to work, we need everyone to come along and understand their responsibility to our blue cod fisheries.



Wider Engagement 1 – Part 1

Summary of Key Findings

- In total, we received 1115 survey responses from around the country (Figure 1).
- We also spoke to people directly at 8 public information sessions which were attended by more than 300 people.
- 85.3% of the online survey respondents were recreational fishers.
- Majority of recreational fisher respondents (90%) from BC03, BC05 and BC07.
- There was 90% support for the Aim and Objectives of the strategy.
- Blue cod fishing is okay in most areas (Figures 2 and 3).
- Blue cod abundance and average size has decreased over time in some areas.
- Several localised fisheries are under pressure from overfishing.

Figure 1: Distribution of responses to the first National Blue Cod Strategy

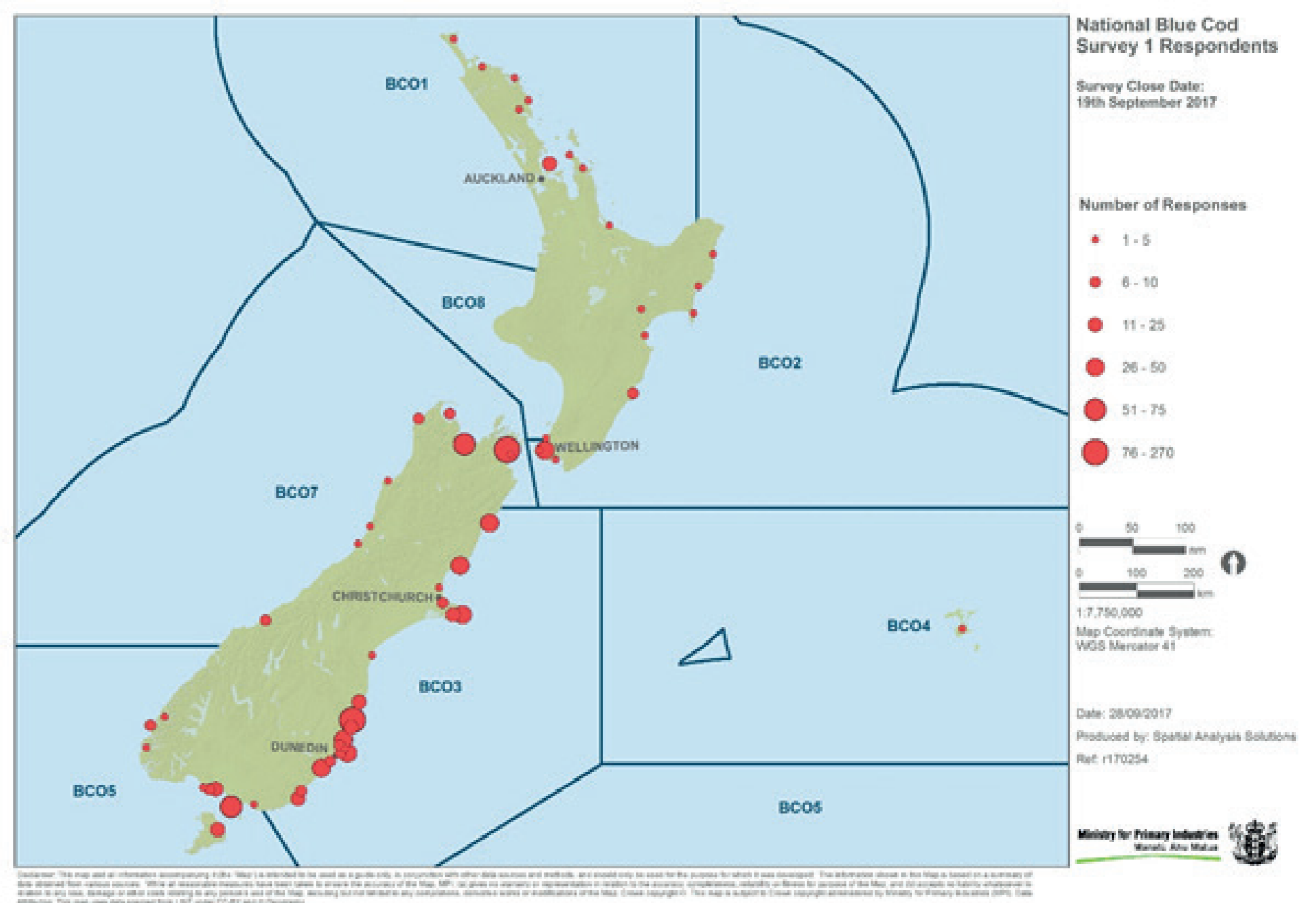


Figure 2: Online survey response to “how would you rate the overall blue cod fishing in your area?”

Q18 – How would you rate the blue cod fishing in your area?	Number of respondents	Good or Very Good	Neutral	Poor or Very Poor
BC03 - Kaikoura	35	26%	23%	51%
BC03 - Outer Banks Peninsula	27	48%	15%	37%
BC07 - Marlborough Sounds	250	45%	19%	36%
BC07 - All	348	45%	20%	35%
National - General public	41	20%	46%	34%
BC07 - Tasman Bay	51	37%	29%	33%
BC02 - All	49	47%	22%	31%
BC03 - Oamaru	20	30%	40%	30%
BC03 - Moeraki	71	56%	15%	28%
National - All	1000	52%	20%	27%
National - Recreational fishers	873	54%	19%	26%
BC03 - All	420	58%	20%	22%
National - Commercial Fishers	43	72%	9%	19%
BC05 - Bluff	60	62%	20%	18%
BC05 - All	139	63%	19%	17%
BC03 - Karitane	35	63%	26%	11%
BC03 - Motunau	40	70%	20%	10%
BC03 - Eastern Otago Peninsula	47	70%	23%	6%
BC03 - Taieri Mouth	35	94%	3%	3%

Figure 3: Online survey response to “how would you rate the availability of legal size blue cod in your area?”

Q19 – How would you rate the availability of legal size blue cod in your area?	Number of respondents	Good or Very Good	Neutral	Poor or Very Poor
BC07 - Tasman Bay	51	27%	24%	49%
BC03 - Kaikoura	35	34%	26%	40%
BC07 - Marlborough Sounds	250	36%	24%	40%
BC07 - All	348	37%	24%	39%
BC02 - All	49	43%	20%	37%
BC03 - Oamaru	20	25%	40%	35%
BC03 - Moeraki	71	58%	11%	31%
BC03 - Outer Banks Peninsula	27	48%	22%	30%
National - General public	41	24%	46%	29%
National - All	1000	48%	23%	29%
National - Recreational fishers	873	49%	22%	29%
BC05 - Bluff	60	50%	28%	22%
BC03 - All	420	57%	22%	21%
National - Commercial Fishers	43	72%	7%	21%
BC05 - All	139	55%	27%	18%
BC03 - Karitane	35	63%	23%	14%
BC03 - Motunau	40	55%	33%	13%
BC03 - Eastern Otago Peninsula	47	66%	26%	9%
BC03 - Taieri Mouth	35	91%	3%	6%



Wider Engagement 1 – Part 2

Overall picture

Identified issues

- Top 7 issues on a **national scale** included:
 - recreational bag limit settings;
 - total allowable catch limit settings;
 - released fish mortality;
 - illegal take of blue cod;
 - localised depletion;
 - amateur fishing charter vessels; and
 - commercial pot mesh size.
- Issues identified at a regional scale differed in both type and rank, highlighting the specific issues present in local areas.

Figure 4: Issues identified in the blue cod fishery on a national and regional scale. Nb. Areas where less than 20 people responded to the survey are not shown in this overview. Scale: Red = high response percentage, Green = low response percentage.

Issue	National - All	National - Recreational fishers	National - Commercial Fishers	National - General public	BC02 - All	BC03 - All	BC03 - Kaikoura	BC03 - Moeraki	BC03 - Motunau	BC03 - Outer Banks Peninsula	BC03 - Oamaru	BC03 - Karitane	BC03 - Eastern Otago Peninsula	BC03 - Taieri Mouth	BC05 - All	BC05 - Bluff	BC07 - All	BC07 - Marlborough Sounds	BC07 - Tasman Bay
Number of respondents	965	856	41	39	50	412	36	69	39	27	20	34	46	35	138	60	339	248	49
Recreational bag limits	48%	46%	61%	33%	30%	66%	33%	83%	62%	44%	80%	65%	78%	71%	49%	47%	28%	25%	39%
Total allowable commercial catch (TACC) settings	44%	44%	15%	46%	52%	42%	58%	43%	31%	59%	15%	32%	43%	49%	41%	40%	46%	46%	45%
Released fish mortality	36%	36%	32%	15%	30%	20%	28%	19%	44%	30%	30%	6%	15%	6%	22%	23%	59%	63%	49%
Illegal take	32%	32%	24%	41%	30%	33%	33%	29%	15%	33%	35%	35%	37%	46%	28%	32%	31%	34%	18%
Localised depletion	31%	31%	17%	36%	28%	32%	31%	39%	44%	37%	60%	24%	28%	17%	28%	28%	30%	31%	33%
Amateur fishing charter vessels	28%	28%	44%	18%	20%	36%	28%	55%	38%	30%	20%	29%	46%	31%	22%	17%	22%	21%	24%
Commercial pot mesh size	26%	27%	17%	15%	42%	26%	28%	19%	8%	30%	15%	26%	30%	34%	27%	23%	22%	25%	6%
Seasonal fishing pressure	25%	25%	10%	15%	12%	17%	11%	22%	33%	11%	20%	15%	9%	9%	12%	8%	41%	43%	39%
Concentrated effort on small areas	24%	23%	24%	26%	30%	22%	42%	17%	21%	26%	45%	18%	20%	14%	25%	18%	22%	20%	24%
Recreational size limits	24%	23%	17%	15%	16%	27%	14%	33%	26%	4%	15%	26%	33%	31%	15%	10%	24%	24%	24%
Accumulation limits - how many fish you can keep over consecutive days	23%	21%	37%	31%	4%	27%	28%	29%	23%	22%	25%	41%	30%	26%	26%	23%	19%	18%	20%
Habitat loss	21%	20%	12%	46%	22%	13%	19%	6%	3%	33%	5%	9%	2%	6%	11%	12%	34%	38%	22%
Small hooks and hook type	18%	17%	29%	13%	10%	12%	11%	10%	28%	19%	5%	9%	9%	3%	17%	18%	26%	27%	31%
Recreational allowance settings	18%	17%	24%	18%	14%	20%	11%	25%	23%	15%	25%	32%	33%	14%	20%	18%	14%	15%	14%
Lack of information for management purposes	15%	15%	7%	10%	24%	15%	14%	12%	15%	22%	5%	24%	15%	9%	12%	10%	12%	13%	10%
Season open during spawning	14%	13%	17%	18%	22%	12%	14%	9%	21%	22%	10%	6%	9%	11%	13%	12%	13%	13%	8%
Lack of education on fishing rules	13%	12%	12%	18%	22%	11%	14%	12%	5%	15%	5%	18%	13%	6%	15%	20%	12%	12%	10%
Section 111 blue cod take	11%	12%	7%	5%	8%	17%	11%	22%	5%	19%	30%	21%	20%	3%	7%	5%	6%	6%	10%
Timeliness of management decisions	11%	10%	10%	8%	2%	9%	17%	14%	5%	4%	10%	0%	9%	6%	4%	3%	16%	18%	10%
Filleting at sea	10%	8%	12%	26%	8%	10%	17%	12%	8%	15%	20%	15%	4%	9%	7%	12%	10%	11%	6%
Recreational pot mesh size	7%	7%	15%	5%	6%	8%	3%	4%	5%	4%	0%	9%	15%	17%	9%	3%	6%	7%	2%
Current regulations	7%	7%	5%	3%	4%	7%	11%	7%	5%	4%	0%	3%	7%	9%	3%	2%	9%	10%	8%



Wider Engagement 1 – Part 3

Highlighted issues facing the fishery.
Have we got these right? Have we missed anything?

BC01 (21 responses)

Top 5 issues:

1. Illegal take
2. Total allowable commercial catch
3. Released fish mortality
4. Habitat loss
5. Localised depletion, pot mesh size, lack of information

BC02 (50 responses)

Top 5 issues:

1. Total allowable commercial catch
2. Pot mesh size
3. Recreational bag limits
4. Released fish mortality
5. Illegal take

BC08 (23 responses)

Top 5 issues:

1. Recreational bag limits
2. Released fish mortality
3. Concentrated effort on small areas
4. Localised depletion
5. Season open during spawning/lack of education on fishing rules/illegal take/habitat loss

BC04 (4 responses)

Top 5 issues:

1. Recreational bag limits
2. Accumulation limits
3. Pot mesh size
4. Concentrated effort on small areas
5. Season open during spawning

BC07 (339 responses)

Top 5 issues:

1. Released fish mortality
2. Total allowable commercial catch
3. Seasonal fishing pressure
4. Habitat loss
5. Illegal take

BC05 (138 responses)

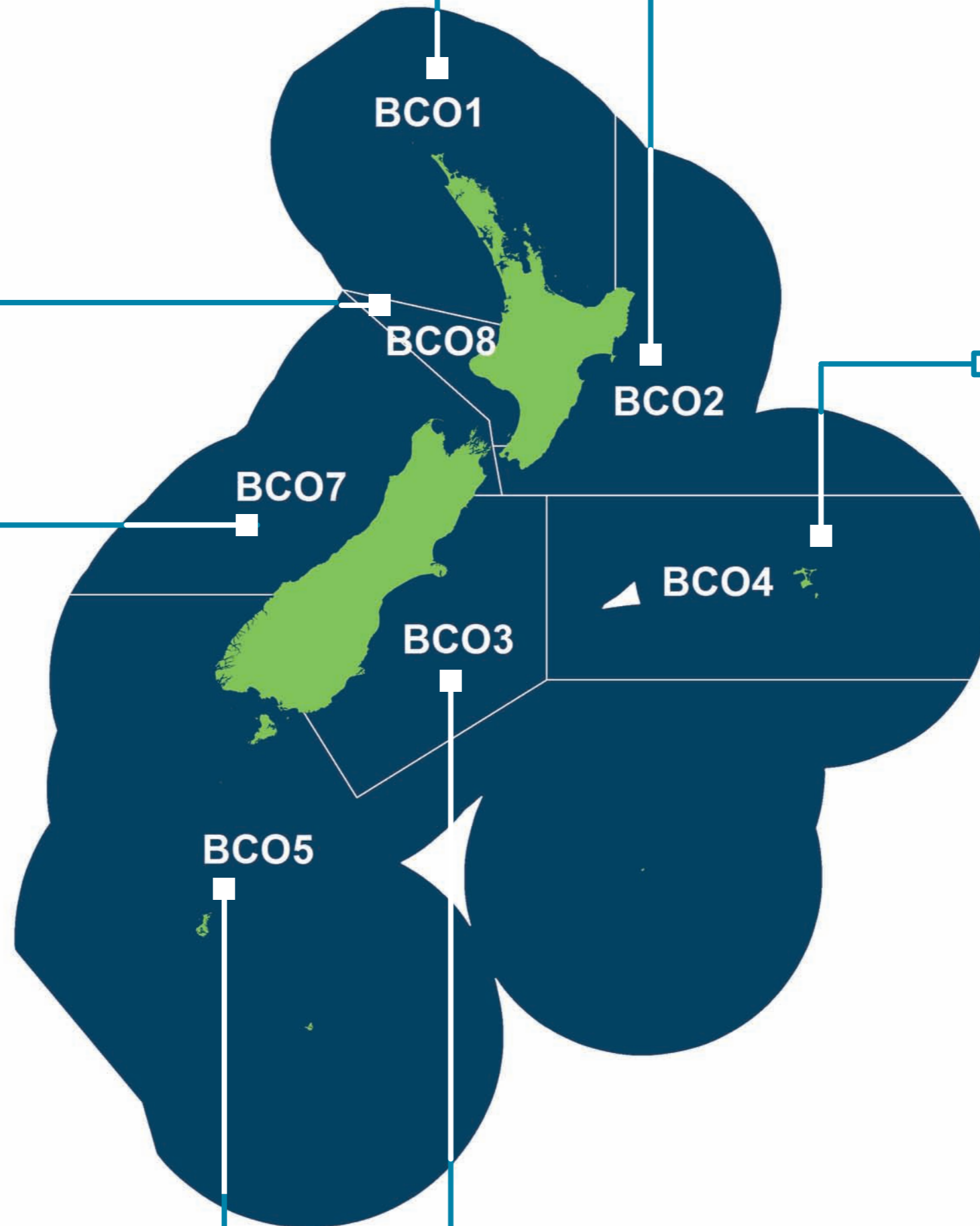
Top 5 issues:

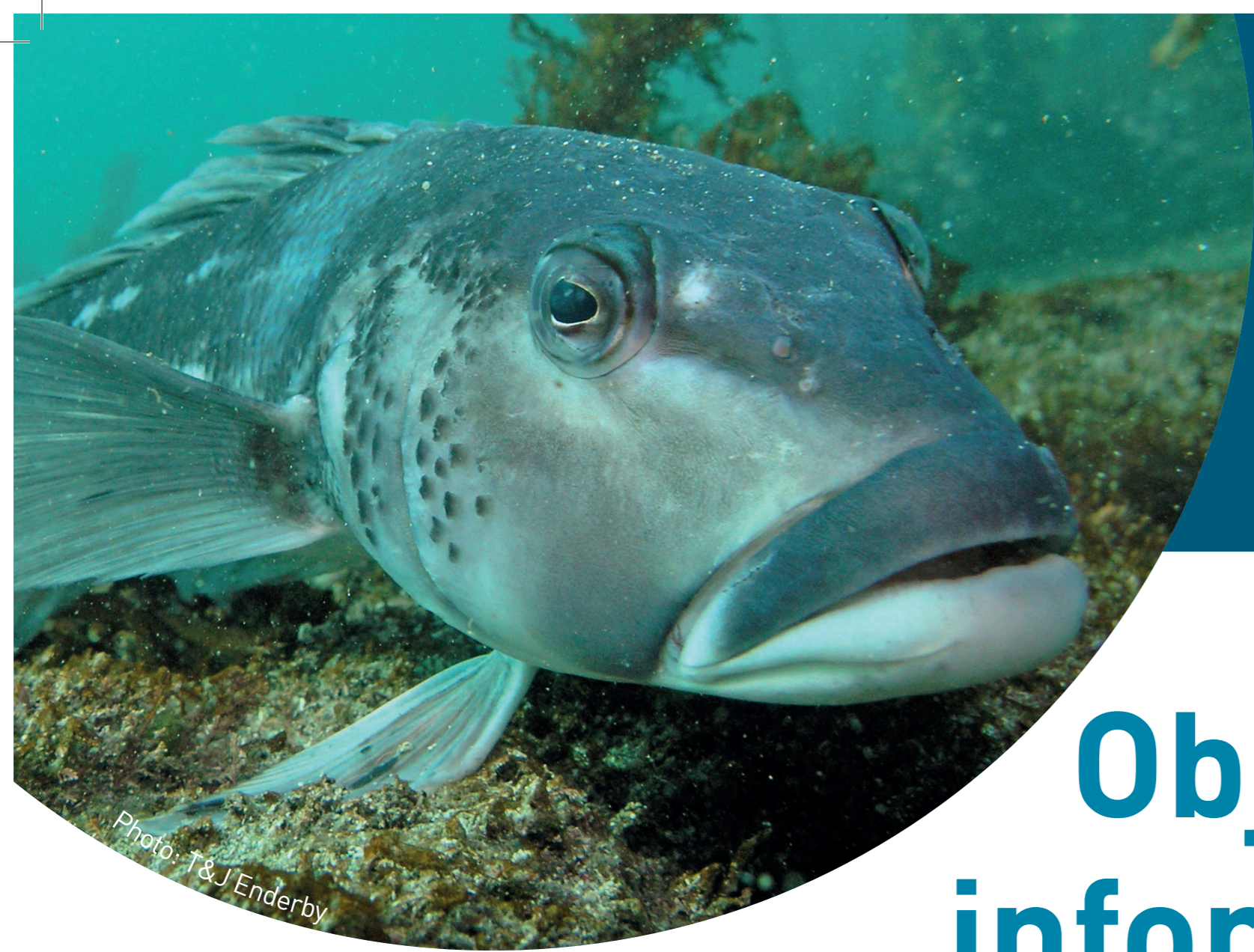
1. Recreational bag limits
2. Total allowable commercial catch
3. Illegal take
4. Localised depletion
5. Pot mesh size

BC03 (412 responses)

Top 5 issues:

1. Recreational bag limits
2. Total allowable commercial catch
3. Amateur fishing charter vessels
4. Illegal take
5. Localised depletion





Objective 1: Get the right information

Information is the bedrock of any fisheries management system. We need the right information and science, and we need to figure out the best way to get it.

In the first online survey, many respondents were concerned about localised depletion and fishing pressure concentrated on small areas. However, the expert workshops identified we have limited information on commercial fishing of blue cod at a local scale, and poor information on recreational catch of blue cod generally.

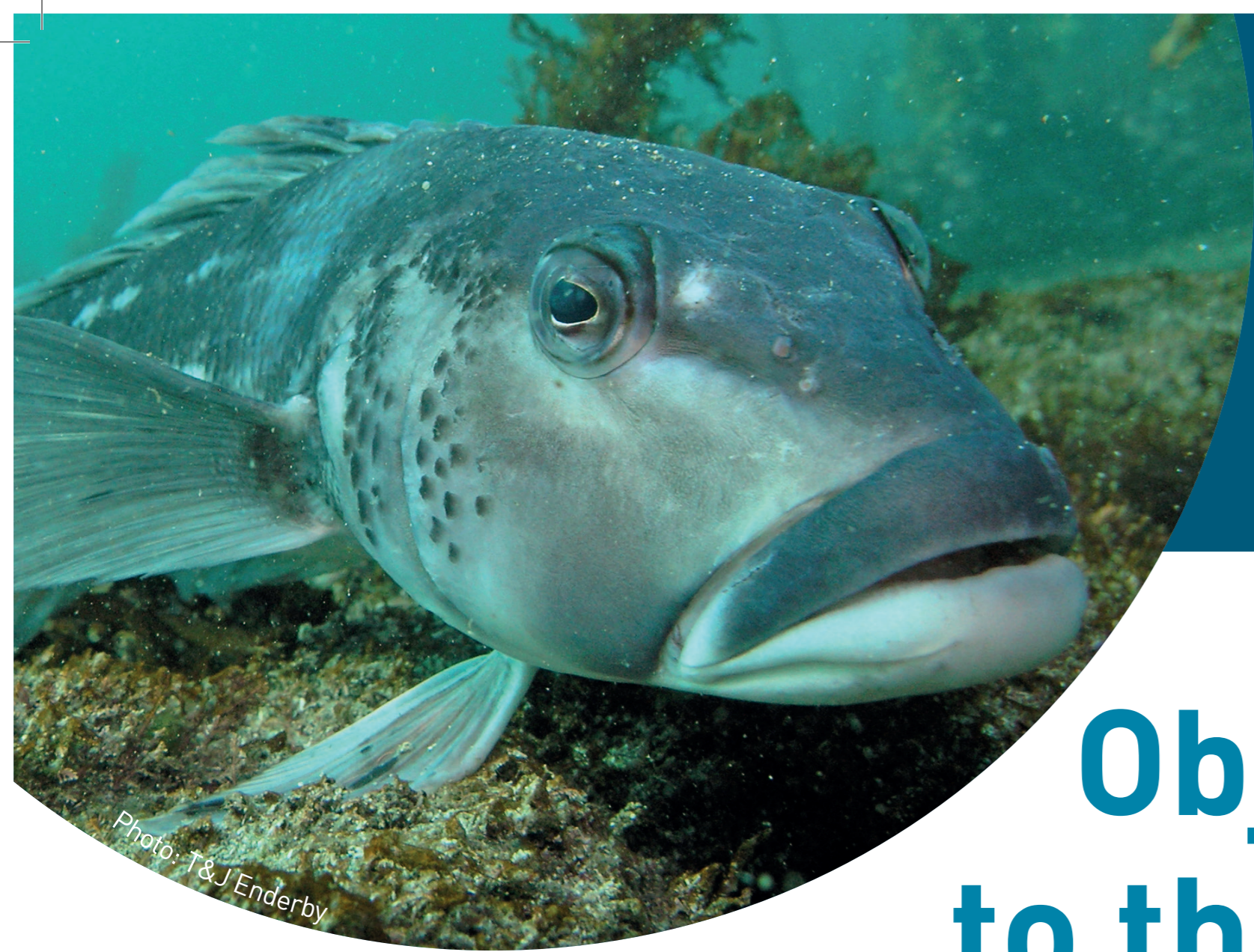
Possible options to better achieve this objective:

- Improve recreational harvest estimates
 - Increase frequency of National Panel Survey
 - Increase the number of boat ramp surveys in high use areas
 - Investigate recreational self-reporting
- Review commercial reporting
 - Implement finer scale electronic reporting for commercial blue cod potting over time
- Better understand recreational expectations of a good fishery
 - Interview fishers to determine what "fish for a feed" means in relation to blue cod

Which of these options do you support/ not support and why?

What other options would help achieve this objective?

Let us know by talking to us, emailing us at fmsubmissions@mpi.govt.nz or filling in the online survey at www.mpi.govt.nz/bluecod



Objective 2: Set and manage to the right targets

Setting targets for fish stocks is about making sure we're keeping stocks at sustainable levels that are right for the fishery and the people using it.

Sustainability limits for some blue cod stocks haven't been reviewed since introduction into the Quota Management System and there are no allowances set for recreational or customary fishers in some blue cod fisheries. This is important to ensure that everyone is accounted for in the overall Total Allowable Catch.

MPI assesses and manages fish stocks using 4 performance measures:

A soft limit – below this level, a fish stock is considered to be overfished or depleted and needs to be actively rebuilt, for example by reducing the total allowable catch.

A hard limit – below this level, a fish stock is considered to have collapsed and fisheries may need to be closed to rebuild at the fastest possible rate.

Overfishing threshold – a rate of stock removal that shouldn't be exceeded as it will lead to stocks falling below other performance measures.

A target level – the level we want a fish stock to fluctuate around for the best balance between use and sustainability, while allowing for environmental variation.

Possible options to achieve this objective:

- Perform a full review of current targets, soft limits and hard limits for blue cod based on the outcomes from engagement
- Set Total Allowable Catches and recreational and customary allowances for BCO 3, 4 and 7.

Do you support these options, and why?

What other options would help achieve this objective?

Let us know by talking to us, emailing us at fmsubmissions@mpi.govt.nz or filling in the online survey at www.mpi.govt.nz/bluecod

www.mpi.govt.nz/bluecod · 0800 00 83 33



Objective 3: Set the right rules

We need to look at the current rules and make changes where appropriate to make sure they're effective, understood and consistent. Feedback provided during the first engagement phase suggested we need to look at the current rules for blue cod and make changes where appropriate to make sure they're effective, understood and consistent.

Possible options to better achieve this objective:

- Nationwide minimum legal size of 33 cm for commercial and recreational fishers?
- Nationwide larger pot mesh size of 54 mm for commercial and recreational fishers?
- Commercial fishers to consider moving to larger pot mesh size over time?
- Amateur Fishing Charter Vessel code of practice?
- Nationwide accumulation limit for blue cod (2 or 3 times the recreational daily bag limit)?

Recreational daily bag limits were a key issue discussed at the public information sessions and in the online survey. There was support for a reduction in areas where depletion is occurring, but not always a consensus on what the limit should be.

One option is to adopt a traffic light system. In areas with healthy blue cod stocks the bag limit would be **green (highest)**, in areas that were rebuilding in the right direction the limit would be **orange (medium)**, and in areas that were in trouble the limit would be **red (lowest)**. As monitoring and ongoing feedback indicates that an area has improved, its status can shift (ie from red to orange, or from orange to green).

The range between highest and lowest bag limits under this system would also be reduced (currently it ranges from 2 to 30) to reduce the incentives for fishers to travel around the country.

- What should the bag limits be for “**green**”, “**orange**” and “**red**” stocks under such a system? For example:
 - **Red 2, 3 or 5?**
 - **Orange 5, 8 or 10?**
 - **Green 10, 12 or 15?**

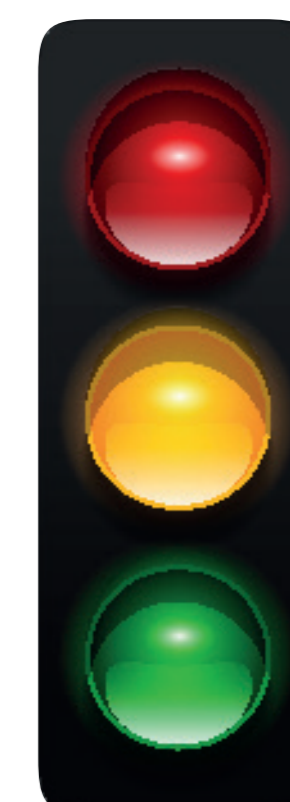
In the first online survey, some respondents suggested the following options that could also be implemented in areas that are in trouble (**red** or **orange** in the traffic light system):

- Require blue cod to be landed whole or gutted only, to help enforce the minimum legal size limit?
- Introduce seasonal closures?
- Introduce area closures?

Some of these options could have an impact on how and where you fish.

Which of these options do you support/not support and why?

Let us know by talking to us, emailing us at fmsubmissions@mpi.govt.nz or filling in the online survey at www.mpi.govt.nz/bluecod





Objective 4: Make the right decisions

We need to make good, consistent decisions and to make sure decisions are made on time.

Feedback provided during the first engagement period suggested that changes in management of the blue cod fishery sometimes take too long and that pre-agreed “decision rules” would assist in ensuring consistent timely decision-making.

Decision rules work by using pre-determined indicators such as potting surveys, commercial catch-per-unit-effort or recreational catch. When these indicators change the decision rule kicks in and limits can be raised or lowered to get the fish stocks back to the desired level.

An example of a simple decision rule that could apply generally to the blue cod fishery, is the traffic light system described in an earlier poster.

Possible options to achieve this objective:

- Develop decision rules or management procedures for both commercial and non-commercial fishing over time. Decision criteria pre-approved by the Minister, making implementation of required changes timely and efficient.

Which of these options do you support/ not support and why?

What other options would help achieve this objective?

Let us know by talking to us, emailing us at fmsubmissions@mpi.govt.nz or filling in the online survey at www.mpi.govt.nz/bluecod



Objective 5: Get buy in

If this is going to work, we need everyone to come along and understand their responsibility to our blue cod fisheries.

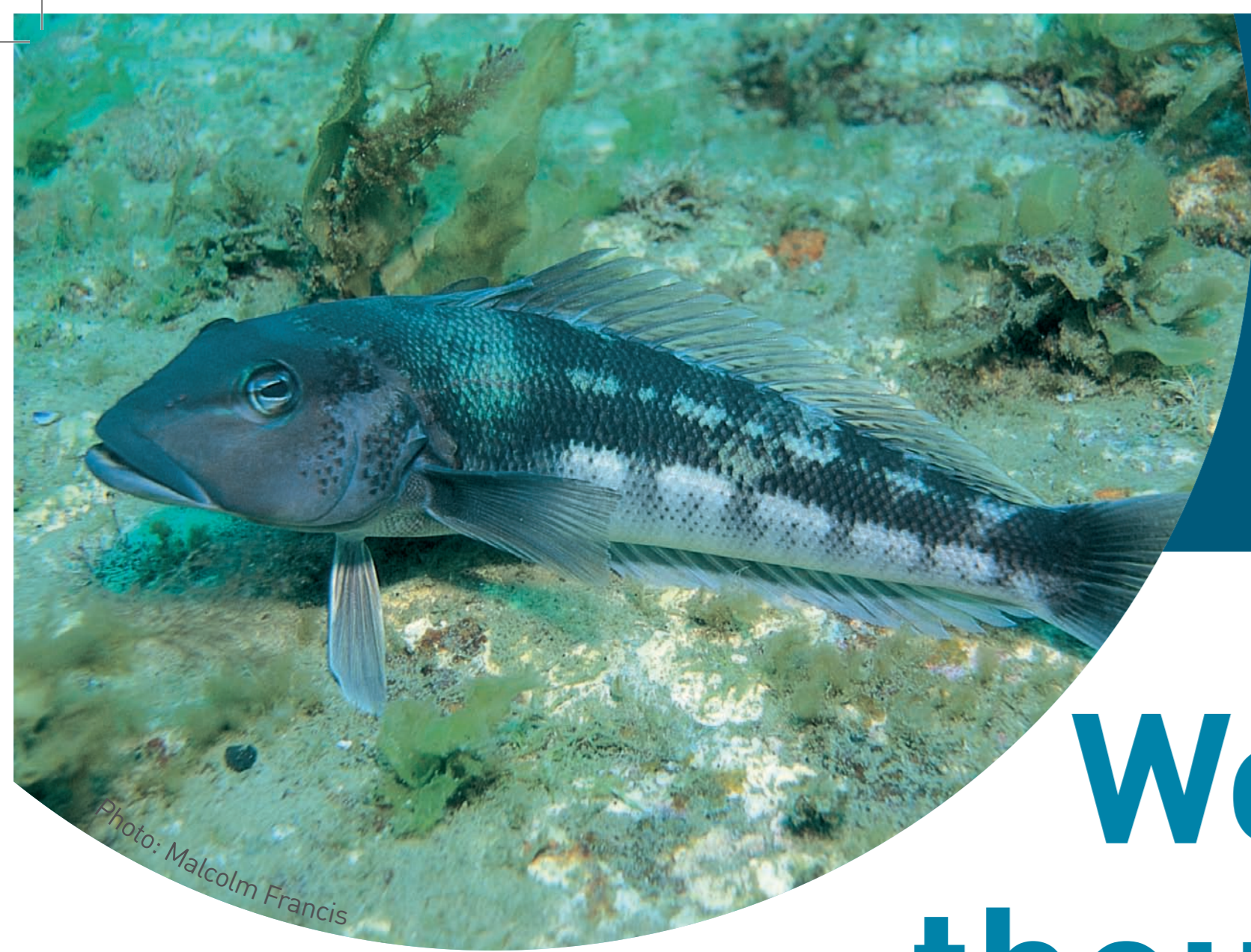
Possible options to achieve this objective:

- General education about blue cod
 - Vulnerable to overfishing and localised depletion:
 - » Localised populations
 - » Unique biology and ecology
 - High value species and taonga to customary fishers
- Focused education and information on:
 - Reducing mortality
 - Larger pot mesh size
 - Using bigger hooks
 - Avoiding predation by seabirds
 - Fishing responsibly
 - Keeping fishers up to date on the health of blue cod stocks
 - Keeping fishers informed of upcoming consultations and proposed rule changes

What is the most important information to focus on and why?

What other options would help achieve this objective?

Let us know by talking to us, emailing us at fmsubmissions@mpi.govt.nz or filling in the online survey at www.mpi.govt.nz/bluecod



We need your thoughts and ideas

Feel free to:

- Talk to one of us
- Fill out our second online survey at www.mpi.govt.nz/bluecod
- Email us at fmsubmissions@mpi.govt.nz

Stay informed:

- You can keep up to date and find out about our progress at www.mpi.govt.nz/bluecod

Or follow one of our recreational fisheries Facebook pages:

- MPI Fisheries Northland
- MPI Fisheries Nelson/Marlborough/Kaikōura
- MPI Fisheries Canterbury/Westland
- MPI Fisheries Otago/Southland

Or sign up to our rec mailing list by emailing recfishingteam@mpi.govt.nz to receive the latest receive information about fisheries issues in your area.