



BAY OF ISLANDS SWORDFISH CLUB INCORPORATED

PO Box 31 Russell, New Zealand. Email: swordfish@xtra.co.nz

Telephone: (09) 403 7857 Fax: (09) 403 7847

26 August 2022

Spatial Planning and Allocations
Fisheries Management
Fisheries New Zealand
PO Box 2526
Wellington 6140

AND BY EMAIL

FMSubmission@mpi.govt.nz

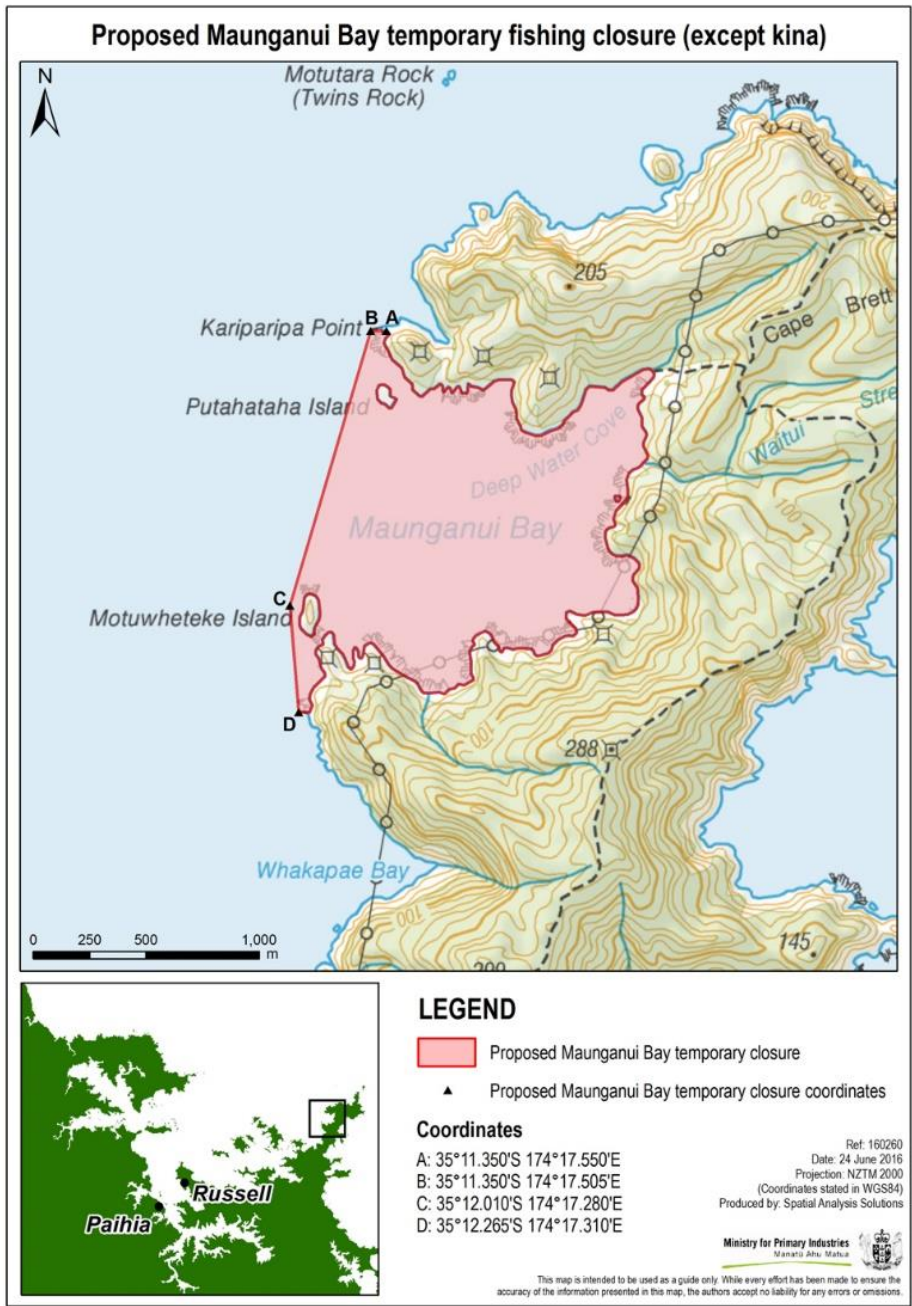
Submission on the request for a further temporary closure of Maunganui Bay, Bay of Islands, to the take of all fisheries resources (except kina)

Submission: Bay of Islands Swordfish Club Inc

1. The Bay of Islands Swordfish Club Inc has a longstanding history in the Bay of Islands which dates back to the early 1920s and has over 1,400 members.
2. The submitters have supported previous s186A fishing closures where there has been a clear purpose to restore abundance and productivity of the marine environment.
3. Our representatives are available to discuss this submission in more detail if required. We look forward to positive outcomes from this process. We would like to be kept informed of future developments. Our contact is Andrew Johnson, Executive and NZSFC delegate – swordfish@xtra.co.nz.

Submission

4. The submitters are pleased to support the application by Te Kupenga o Ngati Kuta and Patukeha ki Te Rawhiti, for a further two-year temporary closure of Maunganui Bay, Bay of Islands, to the take of all fisheries resources (except kina). The current closure of Maunganui Bay is due to expire on 13 October 2022. Submissions in response to the current application are due by 5 September 2022.
5. The submitters acknowledge Te Kupenga o Ngati Kuta and Patukeha ki Te Rawhiti for their consistent and generous commitment to delivering on their kaitiakitanga (guardianship) obligations on behalf of not only these taonga kai moana (treasured) resources, but also the efforts they make to educate the wider community. We urge Fisheries New Zealand to assist the applicants by providing the necessary resources to expand this work.



Kind regards
 Jeff Douglas

Club President
 Bay of Islands Swordfish Club

CLUBHOUSES:

RUSSELL The Strand. Ph 09-403 7857 | **PAIHIA** Marsden Rd. Ph 09-402 7773