

Submission summary

Snapper 7 (SNA 7) & Rig 7 (SPO 7) review 2025/26

Proposal [online here](#).



Fisheries New Zealand proposals

Fisheries NZ has reviewed the commercial catch settings for snapper and rig at the top and west coast of the South Island. FNZ has proposed Total Allowable Catch (TAC) increases for both snapper (SNA 7) and rig (SPO 7), including increases to the Total Allowable Commercial Catch (TACC) and allowance set aside for All Other Mortality caused by fishing (Table 1, Figure 1).

Table 1. Proposed management options (in tonnes) for Rig 7 (SPO 7) and Snapper 7 (SNA 7) from 1 October 2025.

| Stock | Option | TAC | TACC | Allowances | | |
|-------|--------------------------------|---------------|-------------|-----------------|--------------|---------------------------------------|
| | | | | Customary Māori | Recreational | All other mortality caused by fishing |
| SPO 7 | Option 1 (<i>Status quo</i>) | 373 | 298 | 15 | 33 | 27 |
| | Option 2 | 406 (↑ 33) | 328 (↑ 30) | 15 | 33 | 30 (↑ 3) |
| SNA 7 | Option 1 (<i>Status quo</i>) | 1,116 | 720 | 60 | 275 | 61 |
| | Option 2 | 1,214 (↑ 98) | 810 (↑ 90) | 60 | 275 | 69 (↑ 8) |
| | Option 3 | 1,312 (↑ 196) | 900 (↑ 180) | 60 | 275 | 77 (↑ 16) |

Joint recreational submission

The joint submission from the New Zealand Sport Fishing Council, LegaSea, New Zealand Angling & Casting Association, and New Zealand Underwater, highlighted concerns that the proposed increases mean more bottom trawling, putting many species and habitats at risk.

The Minister's duty under the Fisheries Act is to apply a precautionary and ecosystem-based approach given the risks posed by increased trawl activity in Tasman and Golden Bays. It's concerning that the proposed commercial catch increase for rig is being used to justify another snapper limit increase, the 5th increase since 2016.

The only justifiable change is to increase the snapper recreational 3-daily bag limit in the Marlborough Sounds, to 6 per person. The bag limit in the remainder of SNA 7 is 10 per person, per day. Current catches are well below the overall 275 tonne allowance set aside for recreational fishing.

Sustainability is a legal bottom line, not optional. FNZ's current proposals fail to meet statutory obligations. Precautionary management means the Minister must wait until the 2026 stock assessments are completed for snapper and rig before any commercial catch increases are granted.

Fisheries NZ is now reviewing submissions and will make recommendations for the Minister. Any new catch settings will apply from October 1st, 2025.



Figure 1. Snapper 7 & Rig 7 Quota Management Area.

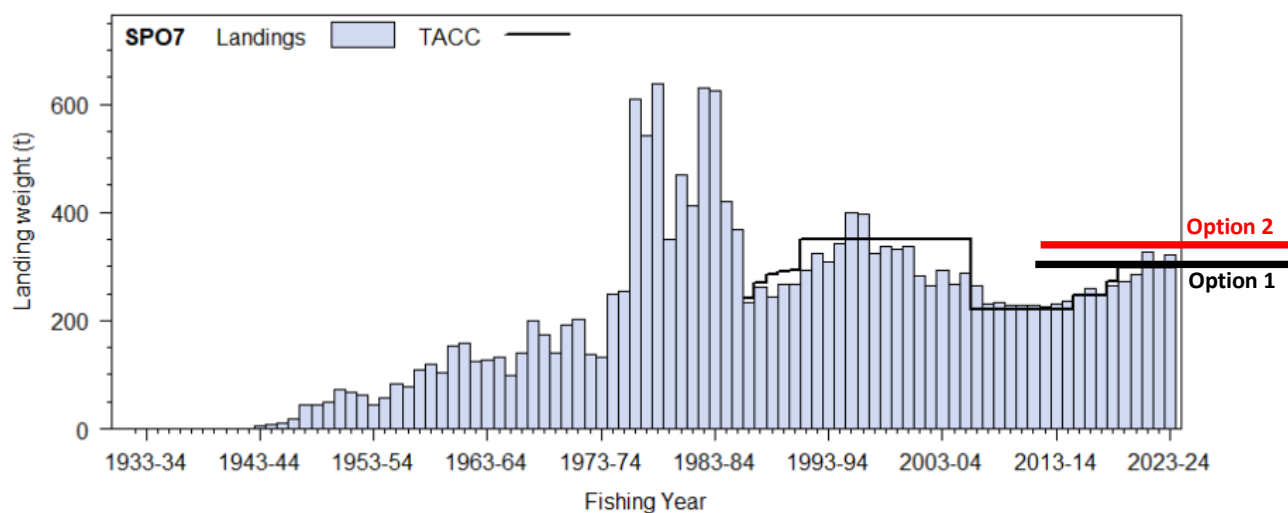


Figure 3. Commercial landings and total allowable commercial catch for Rig 7 (SPO 7). Black line indicates where the total allowable commercial catch will be if option 1 (298 tonnes) is approved. This is the current TACC and option recommended by the joint recreational submitters. The red line shows option 2 (328 tonnes).

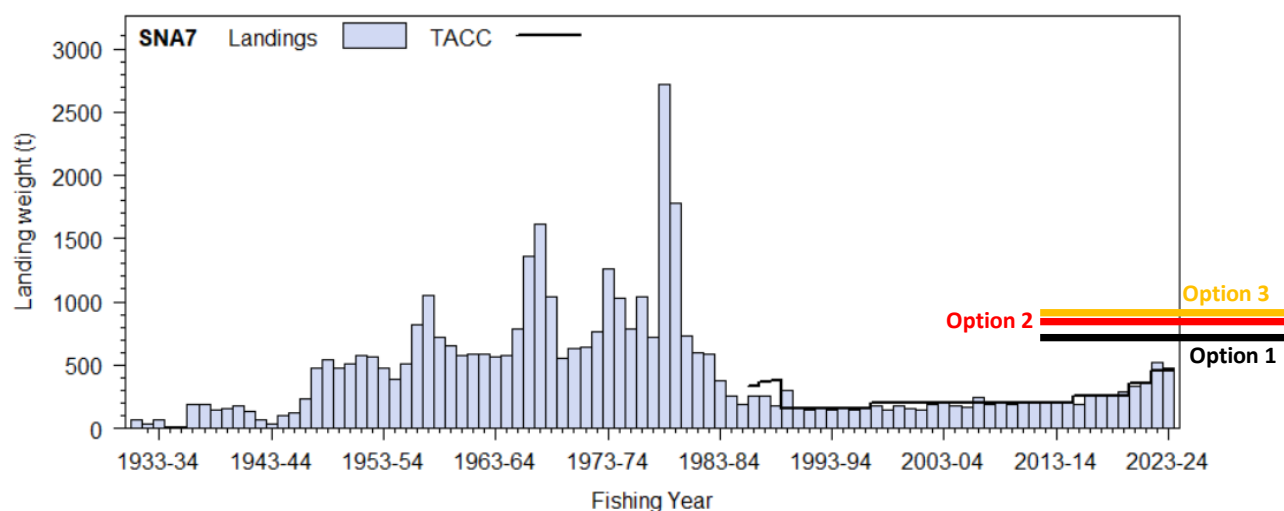


Figure 2. Commercial landings and total allowable commercial catch for Snapper 7 (SNA 7). Landings for 2024-25 are not available yet. Black line indicates where the total allowable commercial catch will be if option 1 (720 tonnes) is approved. This is the current TACC and option recommended by the joint recreational submitters. The red line shows option 2 (810 tonnes). The orange line shows option 3 (900 tonnes).