



2 June 2015

Blue Cod Management Group review of the blue cod fishery in and around the Marlborough Sounds

The Ministry for Primary Industries (MPI), on behalf of the Blue Cod Management Group, is seeking feedback from tangata whenua and stakeholders on proposals to review sustainability measures for the blue cod fishery in the Marlborough Sounds Area and the Challenger (East) area (Figure 1).

The Blue Cod Management Group, which developed these proposals, is made up of government, recreational and commercial fishing representatives.

Blue cod are one of the most important recreational species in the Marlborough Sounds. They are vulnerable to overfishing. The latest science suggests that the fishery needs to recover in some locations, but that fishing pressure is increasing. Furthermore, feedback from the community indicates that the current rules are complex and may not be working.

The Blue Cod Management Group is leading a review of the management measures that apply to this fishery.

The goal of this review is to allow people to enjoy access to a healthy blue cod fishery in the future. Specifically, the review aims to achieve regulations that will:

- maintain and/or improve abundance of blue cod,
- ensure ongoing use and enjoyment,
- encourage responsibility, and
- improve information for decision making.

Additionally, the Blue Cod Management Group recognises a need for developing rules that are simple, understandable, and fair.

The Blue Cod Management Group has developed two options for management measures for the fishery, based on achieving these goals (Table 1). The two options proposed by the Blue Cod Management Group are presented as 'packages', which contain measures that are designed to complement one another to achieve the desired outcomes.

The Blue Cod Management Group have also proposed some additional actions that need to be undertaken alongside any changes to regulations to ensure that the overall goals of the review are met.

The proposals are outlined in detail in the consultation document and more information is provided in a fishery characterisation as Appendix 1 to the consultation document. These are available on the MPI Consultations website at: www.mpi.govt.nz/news-and-resources/consultations/

Making a Submission

Please ensure that MPI receives your submission on the proposals no later than **5pm on Tuesday 30 June 2015**.

Written submissions should be sent to:

Email: MSbluecod@mpi.govt.nz

Post: Fisheries Management
Ministry for Primary Industries
P O Box 2526
Wellington 6140

If you have difficulties accessing the documents or would like a hard copy of the papers, please email MSbluecod@mpi.govt.nz

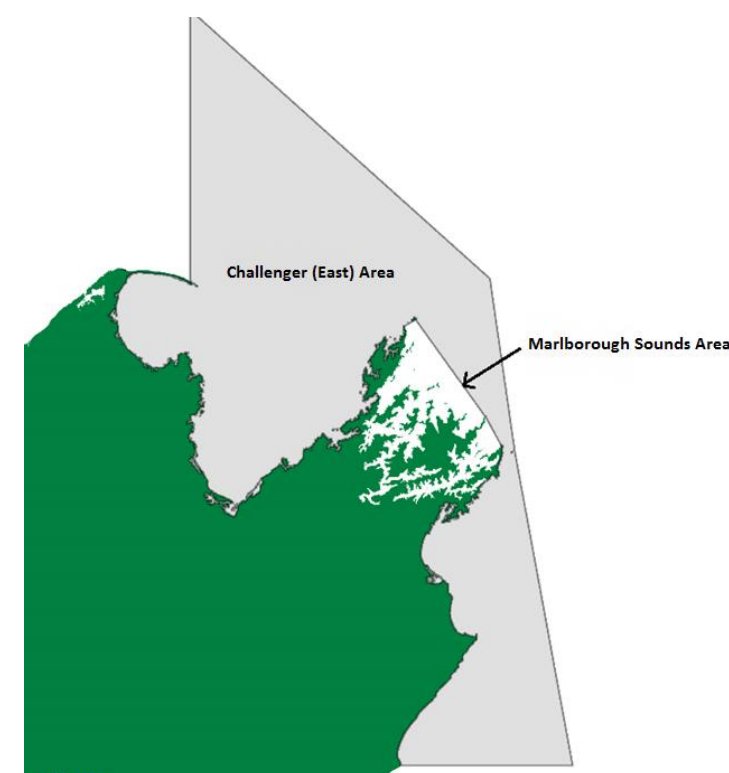


Figure 1: The Challenger (East) area (grey) and the Marlborough Sounds Area (white).

Table 1: Options for proposed regulatory changes to the blue cod fishing rules in the Marlborough Sounds Area and Challenger (East) area.

Management measures	Current settings – Status quo		Option 1 (BCMG preferred package) <i>consistent rules between areas</i>		Option 2 (alternative proposal) <i>rules are not consistent between areas</i>	
	Marlborough Sounds Area	Challenger (East) Area	Marlborough Sounds Area	Challenger (East) Area	Marlborough Sounds Area	Challenger (East) Area
Recreational size limits	'Slot' rule: Minimum legal size of 30 cm Maximum legal size of 35 cm	Minimum legal size of 30 cm No maximum legal size	Minimum legal size of 33 cm No maximum legal size		Minimum legal size of 30 cm No maximum legal size	
Recreational daily bag limit per person per day	Daily bag limit of 2 blue cod	Daily bag limit of 3 blue cod	Daily bag limit of 2 blue cod		Daily bag limit of 2 blue cod	Daily bag limit of 3 blue cod
Recreational accumulation limit	Allow accumulation of 1 daily bag limit	Allow accumulation of 2 daily bag limits	Accumulation limit of 2 daily bag limits		Allow accumulation of 1 daily bag limit	Allow accumulation of 2 daily bag limits
Recreational 'transit rule'	No transporting of blue cod through the MSA that do not meet the rules applied to the area		No transport restrictions		No transport restrictions	
Recreational filleting rule	Must possess blue cod in a whole or gutted state only, unless fish are for immediate personal consumption		Must possess blue cod in a whole or gutted state only, unless fish are for immediate personal consumption		Allow possession of filleted blue cod with frames kept for proof of length	
Seasonal closure	Seasonal closure for recreational blue cod fishing from 1 September to 19 December No commercial closure	n/a	Introduce an 'Inner' Sounds recreational and commercial seasonal closure from 1 September to 19 December Fishing allowed in the 'Outer' Sounds year round	n/a	Recreational seasonal closure from 1 September to 19 December in the MSA Introduce a seasonal closure for commercial fishers in the MSA (time period to be determined)	n/a
Maud Island no take zone	Recreational fishers must not take any finfish from the Maud Island closed area No commercial restriction	n/a	Recreational fishers must not take any finfish from the Maud Island closed area Introduce a finfish no-take zone for commercial fishers around Maud Island	n/a	Recreational fishers must not take any finfish from the Maud Island closed area Introduce a finfish no-take zone for commercial fishers around Maud Island	n/a
Recreational hook limit	Maximum of 2 hooks per line when fishing for any species	n/a	Maximum of 2 hooks per line when fishing for any species	n/a	Maximum of 2 hooks per line when fishing for any species	n/a